



North Bay Jack Garland Airport Corporation
 50 Terminal St., Suite 1, North Bay, ON Canada P1B 8G2

Administration: (705) 474-3026
 Fax: (705) 474-3020 | Email airportmanager@yvb.ca
www.yvb.ca

North Bay, ON	Country:	Canada
CYYB	Coordinates:	North 46° 21' 49" West 79° 25' 22"
	Variation:	10° West
	Local Time:	UTC – 5 (- 4 during day light savings time)
	Elevation:	1214' / 370m
	Max Runway	Length: 10,001' / 3,049m
	CFR	CAT 6, PNR

Weather:

- Metar - H24
- TAF - H24, issue times: 02, 08, 14 & 20 Z

Navigational Aids:

- ILS – IYB 110.9 (Runway 08-26) RVR
- VOR/DME – YYB 115.4 ch 101 W 79 26 11
- VOT – 110.4
 - YB 394 (m), 1.9NM to A/D

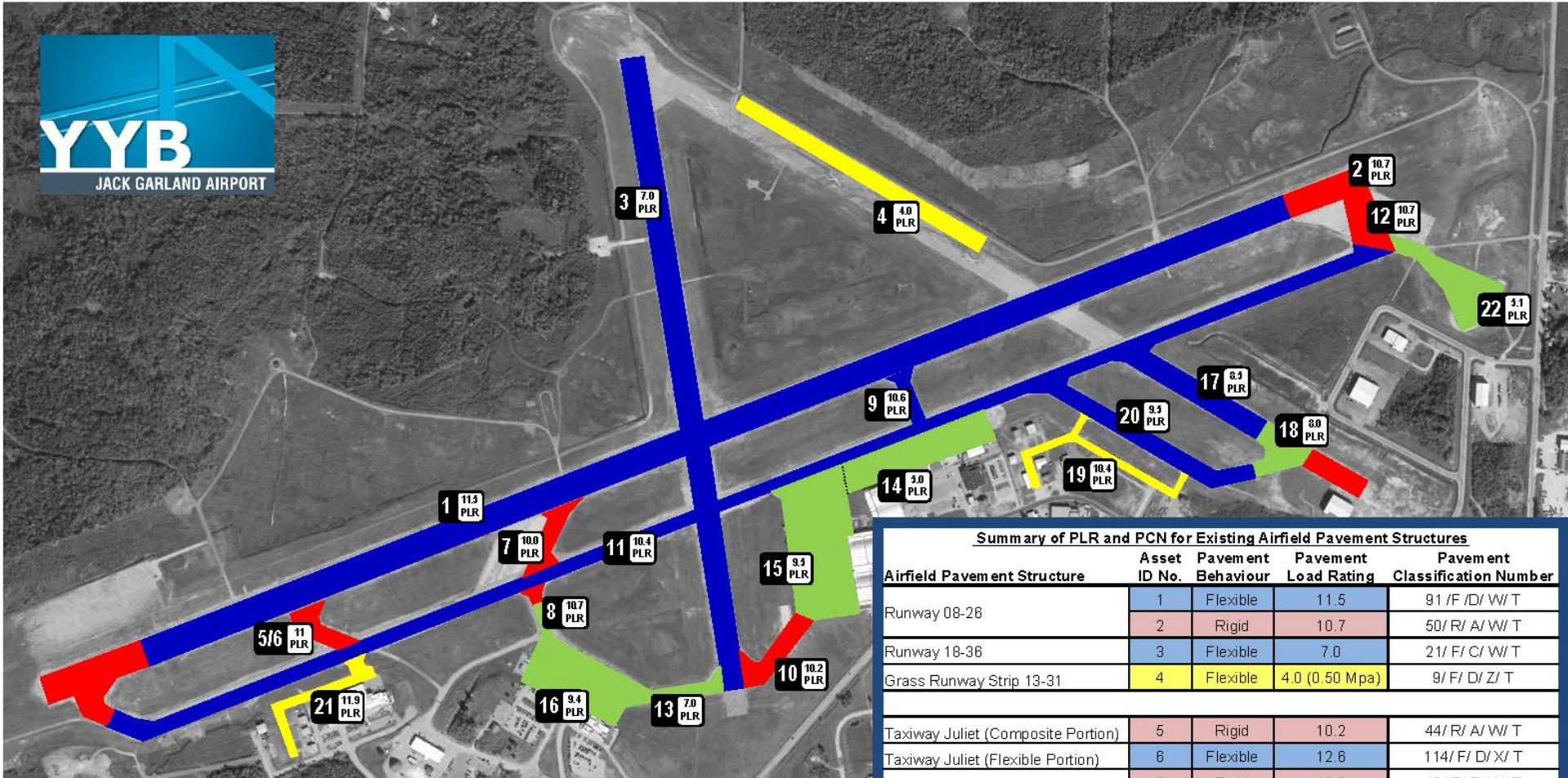
Frequencies:

- ATIS (1130 – 0330Z) 124.9, 228.2
- RADIO – 118.3 236.6 257.2 (E)
- RCO (remote communications outlet) London – 126.7
- PAL – 127.250 121.225 (Toronto Centre)
- VDF – 118.3 Radar available

Runway Data:

- Runway 08/26 – 10,001' x 150' asphalt – PLR 11
- Runway 18/36 – 4,492' x 150' asphalt - PLR 10





Airport Pavement Load Restrictions		
Surface Area	Surface Type	Tire Pressure
Flexible Pavement	Flexible Pavement	-
Composite Pavement with Rigid Behaviour	Composite Pavement with Rigid Behaviour	-
Rigid	Rigid	-
Flexible with Tire Pressure Restrictions	Flexible with Tire Pressure Restrictions	0.5 MPA

Summary of PLR and PCN for Existing Airfield Pavement Structures				
Airfield Pavement Structure	Asset ID No.	Pavement Behaviour	Pavement Load Rating	Pavement Classification Number
Runway 08-26	1	Flexible	11.5	91/ F /D/ W/ T
	2	Rigid	10.7	50/ R/ A/ W/ T
Runway 18-36	3	Flexible	7.0	21/ F/ C/ W/ T
Grass Runway Strip 13-31	4	Flexible	4.0 (0.50 Mpa)	9/ F/ D/ Z/ T
Taxiway Juliet (Composite Portion)	5	Rigid	10.2	44/ R/ A/ W/ T
Taxiway Juliet (Flexible Portion)	6	Flexible	12.6	114/ F/ D/ X/ T
Taxiway Hotel (Composite Portion)	7	Rigid	10.0	42/ R/ B/ W/ T
Taxiway Hotel (Rigid Portion)	8	Rigid	5.8	14/ R/ A/ W/ T
Taxiway Echo	9	Flexible	10.6	74/ F/ D/ W/ T
Taxiway Foxtrot	10	Rigid	10.2	44/ R/ A/ W/ T
Taxiway Lima	11	Flexible	10.4	71/ F/ D/ X/ T
	12	Rigid	10.7	50/ R/ A/ W/ T
Taxiway Golf	13	Rigid	7.0	19/ R/ A/ W/ T
Apron I - Section 1	14	Rigid	5.0	12/ R/ B/ W/ T
Apron I - Section 2	15	Rigid	9.5	45/ R/ C/ W/ T
Apron II	16	Rigid	9.4	36/ R/ A/ W/ T
Apron III - East	17	Flexible	8.5	43/ F/ D/ X/ T
	18	Rigid	8	25/ R/ A/ W/ T
Apron III - West	19	Flexible	10.1 (0.50 Mpa)	66/ F/ D/ Z/ T
Apron III West Charlie	20	Flexible	9.5	57/ F/ D/ X/ T
Apron IV	21	Flexible	11.9 (0.50 Mpa)	99/ F/ D/ Z/ T
Apron V	22	Rigid	5.1	11/ R/ B/ W/ T

Services:

- ➔ Customs: Airport of Entry (AOE15) – (705) 472-8008 (local)
Canpass 1-888-226-7277
- ➔ Immigration: (705) 670-6491
- ➔ Firefighting CFR CAT 6 PNR 60 minutes
- ➔ Field Conditions – FSS (705) 472-3270
- ➔ Noise Abatement – No Restrictions
- ➔ Reserved flight test corridors

FBO and Ground Handling:

➔ Voyageur Airways - Airport Services (World Fuel)

Contact: (705) 476-1750 131.75

Services provided:

- Marshalling and Ramp parking
- Refueling on stand (Jet)
- Electrical Services
- Baggage Handling
- Aircraft Towing
- Lavatory Service Cart
- Oxygen and Nitrogen Service Cart
- De-icing on stand
- Personnel Safety Equipment
- Aircraft Wheel Chocks
- Safety Cones
- Passenger lounge / Pilot lounge
- Plug-ins

➔ Northern Heights (AvJet)

Contact: 705-477-4356

Services provided:

- Aircraft Maintenance and Repair (AMO 42-17)
- Avgas 100LL
- Aircraft Tie Downs
- Hangar Space available for short term and long term
- Wifi
- Restrooms

➔ Executive Aviation

Contact: 705-471-3347

Services provided:

- Marshalling and Ramp parking
- Deicing
- GPU
- Aircraft heating and cooling cart
- Baggage handling
- Airstart

- ➔ Airstairs Available (705) 840-9960 maximum platform height 228”
(B727, B737, B747, B757, B767, A320, A319)



Airlines and Air Service Provider

➔ Airlines

- Air Canada 1-888-247-2262
- Bearskin Airlines 1-800-465-5039

➔ Charter Services

- Voyageur Aviation Corp. – (705) 476-1750
- Helicopters Canada - (705) 494-4354

➔ Flight Schools

- Helicopters Canada – (705) 494-4354

➔ Maintenance (MRO)

- Voyageur Aviation Corp. – (705) 476-1750
- Northern Heights Aviation - (705) 477-4356

For up to date information and applicable airport fees visit:

<https://yyb.ca/travel-planning/pilot-information/>



The following is provided as reference.

Refer to the Canada Flight Supplement for the most current data and clarification of acronyms or abbreviations.

REF N46 21 50 W9 725 27 4NNE 11° W (2015) UTC-5(4) Elev 1215' A5000 A5001 LO4 LO6 LO7 H15 CAP

OPR North Bay Jack Garland Airport Corporation 705-474-3026 Cert

PF A-1,2,3,6,7 C-4,5,8

CUST AOE/15888-226-7277 13-21Z‡ Mon-Fri exc hols PN

FLT PLN NOTAM FILE CYYB When FSS closed, pilots to open/close VFR flt pln with London rdo 123.55 or by phone.

FIC London 866-WXBRIEF (Toll free within Canada) or 866-541-4104 (Toll free within Canada & USA)

WX METAR 1130-0330Z‡ O/T METAR AUTO (see COMM).

TAF H24, issue times: 02, 08, 14 & 20Z. Met brief for mil only Lcl Met Section CSN 628-6648 ltd hr. OT JMC 1-800-WXMETEO (996-3836 or CSN 432-2613 (see COMM) WxCam

SERVICES Call out chg may be levied for one or more svcs

Fuel 100LL, JA-1, HPR (CON I IP JA-1, FSII)

Oil All

S 1,2,3,4,5,6

Sup FI D & A-ice

JASU 10/15

PVT ADV Voyageur Airport Svcs/ World Fuel Services 131.75 705-476-1750 11-02Z‡ Mon-Fri O/T 1 hr
PN Weisflock Aviation Inc/AvJet 122.95 705-472-4910

MIL CON Voyageur Airport Svcs/ World Fuel Services 131.75 705-476-1750

RWY DATA Rwy 08 (077°)/26(257°) 10001x150 asphalt Rwy 08 up 0.66%

Rwy 18 (179°)/36(359°) 4492x148 asphalt

Rwy 13/31 2000x75 turf, seasonal use, May 15-Oct 30

RWY CERT Rwy 08 RVR 1200 (1/4sm)/26 RVR 1200(1/4sm) AGN V

Rwy 18/36 AGN IV

Rwy 13/31 AGN I

APRON Apron I no win maint. Apron I PPR, Voyageur Airways 705-476-1750 Ext 261.

RCR Opr CRFI Win maint 11:30 -02Z‡ O/T PN 705-840-9964 Nov 1-Mar 30. PLR/PCN

LIGHTING 08-AN(TE HI) P1, 26-AO(TE HI) P1, 18-AO(TE HI) P1, 36-AO(TE HI) P1 ARCAL-118.3 type K all lgt. Apron III partial retro-reflective and apron IV/V retro-reflective only.



COMM

Radio 118.3 (E) 1130-0330Z‡ (emerg only 705-472-3270)
RCO London 123.55 (FISE) 126.7 (bcst)
ATIS 124.9 1130-0330Z‡
MF rdo 118.3 1130-0330Z‡ O/T tfc 7NM 5000 ASL (CAR 602.98)
PAL Toronto Ctr 127.250
AWOS 124.9 0330-1130Z‡

NAV

VOR/DME YYB 115.4 Ch 101 N46 21 50 W79 26 11 (1207')
ILS IYB 110.9 (Rwy 08) RVR Unmonitored when FSS clsd

PRO

Right hand circuits RWY 18 & 26 (CAR 602.96).

CAUTION

Twr 1400' 1.8NM SE of thld rwy 26. Pilots should avoid overflight of Natural gas pumping stn lctd 2.1NM NW. Glider activity at & in vic of aprt Sat, Sun, hols Apr-Jun & Sep - Nov: During win months when FSS clsd), aprt maint & snow removal vehicles may be operating on the rwy surface. Ctc all ground vehicles on airport radio when FSS is clsd. During win months ski hill snow making activity 1.5NM SSW of aprt may produce local obscuring & icing phenomena on aprch to Rwy 36 or dep from Rwy 18. Extv hell tng activity. Firing range aprx 1NM SSE of Thld 36

